



News & Views

August 2022 Issue



Table of Contents

| | |
|--|----|
| NBASW Ethics, Standards and Guidelines Training..... | 1 |
| Annual Events Recap..... | 2 |
| NEW Course Available | 4 |
| STUSocialWorkResearchProject..... | 5 |
| Bursaries, Grants, and Funds Recipients..... | 6 |
| Bursary,Grants,andFundsUpcomingDeadlines..... | 7 |
| Committee Vacancies..... | 8 |
| Meet Our New Staff Member..... | 8 |
| Continuing Education Opportunities..... | 9 |
| Recruitment and Retention Survey - Draw Winner..... | 12 |
| Wellness Resources..... | 12 |
| Traumatic Psychological Injury - SUCCEED Program..... | 13 |
| Research Project for Family Caregivers..... | 14 |
| Brain Story Certification..... | 15 |
| Research survey: Psychological Health and Safety during COVID-19.. | 15 |
| Stay Social..... | 16 |

NBASW Ethics, Standards and Guidelines Training

Following the adoption of the newest Continuing Professional Education (CPE) Policy (in effect since April 1, 2022), please be reminded that NBASW members, practicing and non-practicing, must complete at least one NBASW Ethics, Standards and Guidelines Training every year.

A webinar recording on the Standards Regarding Telehealth Services, the Use of Technology and Social Work Practice has been created for members to complete as part of the mandatory CPE Policy training and to learn more about practicing social work virtually.

The presentation reviews the benefits of technology, identifies the potential risks of technology and social media, looks at ethical obligations and standards for technology in the workplace, and provides risk management strategies.

This webinar counts as one hour of professional education and more time can be counted if members decide to review/fill out the adjacent documents such as the Ethical Scenarios Worksheet, the Technology Standards Information Form, and the Technology Standards themselves.

Should you have any questions regarding the webinar or related documents, please contact the NBASW's Social Work Consultant, Keara Grey, at keara.grey@nbasw-attsnb.ca.

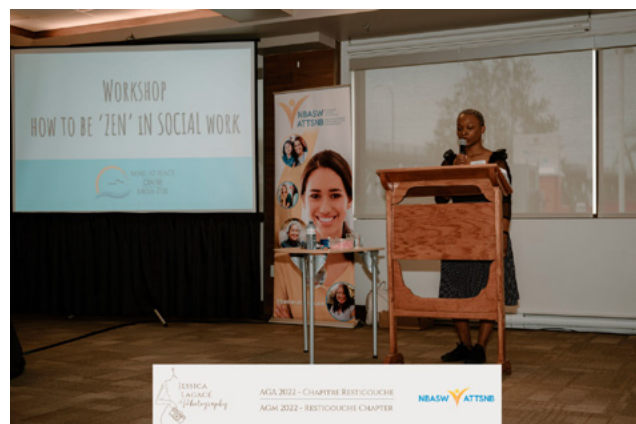
[CLICK HERE TO ACCESS THE TRAINING](#)

Annual Events Recap

On June 4th and 5th, the Campbellton Chapter hosted the Association's annual events.

Annual Conference

The Conference, *How to be Zen in Social Work*, led by Marie-Pierre Godin, was presented during a time when social work professionals are as likely as ever to experience vicarious trauma, compassion fatigue, and burnout. Attendees were presented with wellness strategies, information on leading a balanced life, as well as immersive exercises such as visualization techniques and yoga to help them stay zen.



Silent Auction

The silent auction presented a variety of items for sale and raised \$406! Every year, the proceeds collected from the silent auction are allocated to a bursary fund for the NBASW.

Raoul Léger Banquet

This year's Raoul Léger Banquet had a very groovy theme: The 70's! Everyone's retro fashion set the tone for a nostalgic evening, which was fitting to present the Raoul Léger memorial Award, as we looked back on the award winner this year, along with his accomplishments. The Raoul Léger Memorial Award is presented yearly to a social worker in New Brunswick who has made a significant contribution to the advancement of the practice of social work and social justice in New Brunswick. This award is presented in memory of Raoul Léger, a social worker who devoted his career and gave his life for the advancement of social justice in Guatemala.

This year's recipient was **Gino Mallais**.
Congratulations Gino!



Annual General Meeting

The committees, chapters, and staff presented their respective reports to demonstrate the hard work and results achieved and we are pleased to announce that the Annual Report was adopted as submitted. In email correspondences sent to members prior to the AGM, a drafted copy of the Annual Report was attached. We now present to you the adopted 2021-2021 Annual report, which you can find by [clicking here](#).

Your 2022-2023 Board of Directors

Executive

President: Géraldine Poirier Baiani, RSW

Vice President : Carole Gallant, RSW

Secretary : Julie Ouellette, RSW

Treasurer : Luc Poitras, RSW

Other Representatives

CASW Representative: Barb Whitenect, RSW

Mi'gmaq First Nations Representative: Vacant

Wolastoquiyik First Nations Representative: Tina Martin, RSW

Public Member: Candice Pollack

Chapter Directors

Acadian Peninsula: André-Marc Friolet, RSW

Chaleur: Eric Gauvin, RSW

Charlotte County: Vacant

Edmundston/Grand-Falls: Karine Levesque, RSW

Fredericton: Valerie DeLong, RSW

Miramichi: Mylène Morris, RSW

Moncton: Jenny Haché, RSW

Restigouche: Tany Ndopedro, RSW

Saint John: Ian Rice, RSW

Sussex: Julie Devine, RSW

NEW Course Available

St. Thomas University is opening its graduate level Social Work and Health Care course to practicing social workers. Social workers that successfully pass the course may use the credit towards a Master of Social Work degree at STU. This three hour per week, in-class course will take place throughout the fall of 2022 and is designed to promote best practices in health care and would be helpful to any social work practitioner currently working in the field of health or interested in exploring that field for employment. Individuals do not need to be accepted to the MSW program to [enrol](#).

For more details and to [enrol](#), visit [St. Thomas University's website](#).

STU - Social Work Research Project

About the Research

This research is inspired by, and derived from, Bachelor of Social Work (BSW) students who consistently seek practical wisdom and stories of local structural social workers to gain insight into how to maintain and practice structural social work in predominantly conventional settings. The goal of the overall project is to provide BSW students with practical wisdom, advice, and inspiration for maintaining structural social work, offering examples of applications of structural practice in an Atlantic Canadian context. The insights and stories will be used to inform anecdotal class work, journal articles, conference presentations and educational materials. All information shared will be confidential. Please contact Dr. Michelle Greason for more information: mgreason@stu.ca [REB2022-10]



Seeking Participants

Are you a structural social worker working in Atlantic Canada? We are looking for your practice wisdom!

Inspire future social workers by participating in a new research study: ***Embodying Structural Social Work in Practice*** conducted by Dr. Michelle Greason and a team of BSW students from St. Thomas University.

Details:

- You will be asked to participate in a **virtual interview lasting 1-1½ hours**.
- Your input will be used to inform social work education and bridge the gap between structural social work theory and practice.

Interested?

Contact Dr. Michelle Greason at mgreason@stu.ca with any questions or for more information.



REB2022-10



Bursaries, Grants, and Funds Recipients

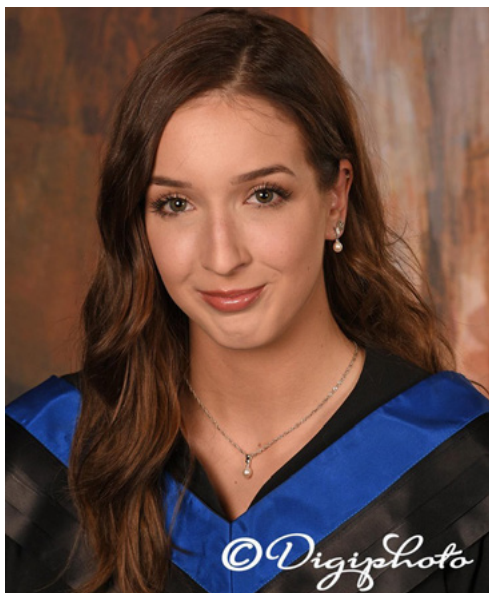
The NBASW is pleased to announce the annual bursaries, grants and funds recipients!



Alyssa De Lenardo
Co-operators Bursary for Members



Cassandra Ackerson
UNI Partnership Fund



Joannie Volpé
NBASW Bursary Fund



Laura Ann Paul
UNI Education Grant



Isabelle Godin
UNI Education Grant



Shannon Ginnish
MMBSW Co-operators Student Bursary

Bursaries, Grants, and Funds Upcoming Deadlines

The NBASW offers financial assistance to members for their education or continuing professional development. Upcoming deadlines include:

Co-operators Bursary for Student Members

The Co-operators home and auto insurance, in partnership with the NBASW, are pleased to offer this \$500 Bursary, awarded on an annual basis. Student members of the NBASW who are studying in the St. Thomas University Post Degree Program can apply by November 1st, each year.

- [Eligibility requirements](#)
- [Application form](#)

UNI Bursary for Student Members

The UNI Financial Cooperation, in partnership with the NBASW, is pleased to offer a student bursary awarded on an annual basis. Social work students who are registered as NBASW student members and who reside in New Brunswick while studying in a school of social work full time through distance education are eligible to apply for the bursary. The application deadline for this bursary is October 1st each year.

- [Eligibility requirements](#)
- [Application form](#)

Committee Vacancies

The NBASW is seeking to fill vacancies on some of our committees (listed below). To apply to a committee, please send the name of the committee you're interested in joining and your resume to info@nbasw-attsnb.ca.

- **Education Committee**
- **Committee of Examiners**
- **Indigenous Guidance Committee**
- **Practice Issues, Ethics and Professional Standards Committee**
- **Promotion of the Profession Committee**
- **Social Action Committee**

Meet Our New Staff Member

The Association welcomes Laure Piccetto as our Communications Officer! Laure is responsible for the creation and planning of activities related to communications and media relations. This involves writing communications materials, as well as planning and arranging events in support of the NBASW mandate.

Laure graduated with a diploma in Advertising and Marketing Communications from La Cité, in Ottawa Ontario. In her spare time, she enjoys boxing, reading, painting, and exploring the beautiful sceneries that New Brunswick has to offer. She is eager to be back in this role.

Need to contact us about a communications matter?

Laure can be reached at laure.piccetto@nbasw-attsnb.ca or (506) 455-1806.



*Laure Piccetto,
Communications Officer*

Continuing Education Opportunities

Note that all events labeled "ACHIEVE" or "CTRI" are eligible for the NBASW discount code. To get the 15% discount, please use the code NBASW15 at checkout. For more events from ACHIEVE, [click here](#), and for more events from CTRI, [click here](#).

CTRI: Anxiety - Practical Intervention Strategies

DATE: August 8, 2022 (1pm to 2pm CT)

[Click here for details and to register](#)

ACHIEVE: Dealing with Difficult People

DATE: August 9, 2022 (9am to 4pm)

[Click here for details and to register](#)

CTRI: Trauma - Informed Leadership

DATE: August 11, 2022 (1pm to 2pm CT)

[Click here for details and to register](#)

CTRI: Vicarious Trauma - Strategies for Supporting Resilience

DATE: August 22, 2022 (1pm to 2pm CT)

[Click here for details and to register](#)

CTRI: Suicide Intervention Skills - Promoting Life

DATE: August 30, 2022 (1pm to 2pm CT)

[Click here for details and to register](#)

CTRI: Leadership and Culture - How to Create a Workplace Where People Like to Work

DATE: September 7, 2022 (1pm to 2pm CT)

[Click here for details and to register](#)

CTRI: Depression - Practical Intervention Strategies

DATE: September 9, 2022 (1pm to 2pm CT)

[Click here for details and to register](#)

Medical Assistance in Dying (MAiD) with Dying with Dignity Canada-

DATE: September 13, 2022 (11am to 12pm EDT)

[Click here for details and to register](#)

CTRI: Regulation - Strategies for Children and Youth

DATE: September 16, 2022 (1pm to 2pm CT)

[Click here for details and to register](#)

Life in Rural Canada: An introduction to the mental health of farmers

DATE: September 21, 2022 (12pm to 1pm EDT)

[Click here for details and to register](#)

CTRI: De-escalating Potentially Violent Situations

DATE: September 23, 2022 (1pm to 2pm CT)

[Click here for details and to register](#)

CTRI: Motivational Interviewing- Strategies for Supporting Change

DATE: September 26, 2022 (1pm to 2pm CT)

[Click here for details and to register](#)

Understanding Concurrent Disorders and Exploring Best-Practices-

DATE: September 26, 2022 (11am to 12pm EDT)

[Click here for details and to register](#)

CTRI: Navigating Difficult Client Relationships

DATE: October 3, 2022 (1pm to 2pm CT)

[Click here for details and to register](#)

Family Dynamics at The End of Life and in Grief

DATE: October 4, 2022 (11am to 12pm EDT)

[Click here for details and to register](#)

CTRI: Management and Supervision - The Crucial Skills

DATE: October 7, 2022 (1pm to 2pm CT)

[Click here for details and to register](#)

CTRI: Ethics of Helping - Boundaries and Relationships

DATE: October 11, 2022 (1pm to 2pm CT)

[Click here for details and to register](#)

Mind Your Money Series - Session 1: Psychology of Spending

DATE: October 11, 2022 (11am to 12pm EDT)

[Click here for details and to register](#)

Mind Your Money Series - Session 2: Technology & Spending

DATE: October 18, 2022 (11am to 12pm EDT)

[Click here for details and to register](#)

Mind Your Money Series - Session 3: Psychology of Saving

DATE: October 25, 2022 (11am to 12 pm EDT)

[Click here for details and to register](#)

CTRI: Walking With Grief - Helping Others Deal With Loss

DATE: October 28, 2022 (1pm to 2pm CT)

[Click here for details and to register](#)

Wellness Resources

Social workers throughout New Brunswick provide essential services to some of the most vulnerable people in our communities. While this is essential work, social workers also need to remember their own personal wellness. If you have a wellness resource you'd like to see included in a future edition of the newsletter, please send it to our Communications Officer at laure.piccetto@nbasw-attsnb.ca

HOW TO CULTIVATE THE RESOURCES FOR RESILIENCE

[Click here for the full article...](#)

5 EXERCISES DE MINDFULNESS POUR APPRIVOISER LE STRESS

[Click here for the full article \(French resource\)...](#)

Recruitment and Retention Survey - Draw Winner

Earlier this year, the NBASW sent members a survey relating to recruitment and retention in the province. Members had the option to enter their name in a draw for a chance to win a free NBASW membership. We would like to thank everyone who participated and congratulate **Jesse Witzell** on winning the draw!

Did you know?

Members have access to professional liability insurance through BMS, the company that provides insurance for the CASW. Also, did you know that for a small additional annual fee, you can purchase a legal services package that gives you unlimited access to telephone legal advice, legal document templates, and more!

Traumatic Psychological Injury - SUCCEED Program



WorksafeNB has developed a program for traumatic psychological injuries (TPIs). The SUCCEED program provides workers with a TPI immediate access to psychological care on application of a workers' compensation claim. The SUCCEED program lasts for six weeks and may be extended based on needs.


Whether you are a worker with a TPI, an employer supporting a worker with a TPI, or a health care provider treating a worker with a TPI, there are resources available to you.

To learn more about the program, visit [WorksafeNB's website](#).

Research Project for Family Caregivers



Société Alzheimer Society
NEW BRUNSWICK / NOUVEAU-BRUNSWICK



Family caregivers are needed to participate in a study to evaluate the benefits of a new tele-counselling program with the Alzheimer Society of New Brunswick.

Are you a family member or friend caring for someone living with Alzheimer's disease or another form of dementia in N.B.?

Caregivers can sometimes feel stressed, anxious or overwhelmed, but a new tele-counselling and mindfulness program could help!

VOLUNTEERS WILL

- **Complete short surveys** about their mood and stress
- **Receive support** in the form of 6 to 8 tele-counselling sessions by phone, computer or text over 3-6 months OR 2 check-in telephone calls from staff

Please contact Isabelle Boulay at 506-268-2686 or iboulay@alzheimernb.ca for more information.
www.alzheimer.ca/nb/act

This project has been reviewed by the UNB Research Ethics Board and is on file as number 2022-055. Please contact Dr. Pam Durepos at 506-292-6736 or p.durepos@unb.ca for any questions. If you wish to discuss this project with someone who is not involved in the study, please contact Dr. David Coleman, Chair UNB Fredericton Research Ethics Board at dcoleman@unb.ca or (506) 453-5189.

New Brunswick
Health Research
Foundation



Fondation de la
recherche en santé
du Nouveau-Brunswick

RECHERCHE
EN SANTÉ
MENTALE
CANADA

MENTAL
HEALTH
RESEARCH
CANADA

Family caregivers are needed to participate in a study to evaluate the benefits of a new tele-counselling program with the Alzheimer Society of New Brunswick. Please visit www.alzheimer.ca/nb/act or call The Alzheimer Society at 1-800-664-8411 to learn more.

Brain Story Certification

The University of Oxford, in partnership with the Alberta Family Wellness Initiative, is working to share knowledge about the science of brain development for families and professionals. This is important information for everybody to understand how our earliest experiences can affect our long-term mental and physical health. This free, 19-module course aims to provide deeper understanding of brain development and its connection to addiction and mental health.

For more information and to enroll, visit the [Alberta Family Wellness Initiative's website](#).

Research survey: Psychological Health and Safety during COVID-19

A research study (SMU Research Ethics File #21-053) by Saint Mary's University and research partners Canadian Standards Association (CSA), Health Canada, CUPE, and Howatt HR Applied Workplace Research Institute is being conducted on what healthcare organizations are doing to address mental health for healthcare workers during the pandemic. The survey is focused on identifying your primary concerns related to workplace psychosocial factors and hazards, and practices, programs, and policies that are having a positive impact on employee mental health.

This research is intended to understand the significant changes and challenges being faced by employees, share lessons learned, and inform revisions to the [National Standard on Psychological Health and Safety in the Workplace](#).

[Click here to participate.](#)

Stay Social

Facebook



Our English page:

New Brunswick Association of Social Workers [@NBASW](#)



Our French page:

Association des travailleuses et des travailleurs sociaux du
Nouveau-Brunswick [@ATTSNB](#)

Twitter



Our English page:

New Brunswick Association of Social Workers [@NBSocialWorkers](#)



Our French page:

Association des travailleuses et des travailleurs sociaux du
Nouveau-Brunswick [@TravSocNB](#)

Have something you'd like to see in the NBASW Newsletter? We're always looking for stories about social workers, events, and more to add. If you've got something you'd like us to include, please email laure.piccetto@nbasw-attsnb.ca with the subject line "Newsletter."

